

Spare parts list

Edition 120613



The following control panels are renamed:

New name	Old name
Aristo™ MA4	MA4
Aristo™ MA6	MA6
Aristo™ U6	U6

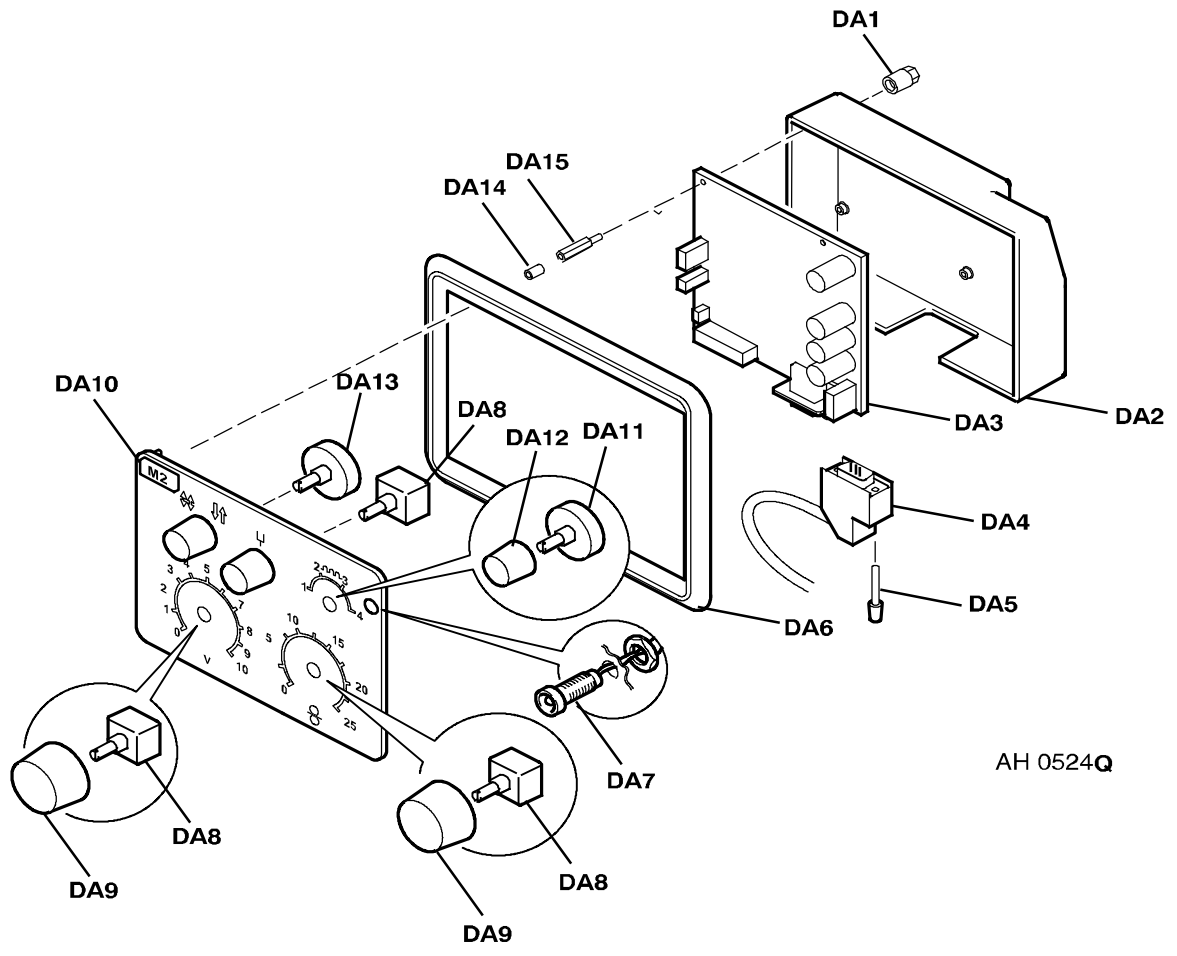
Spare parts are to be ordered through the nearest ESAB agency. Kindly indicate type of unit, serial number, denominations and ordering numbers according to the spare parts list.

Maintenance and repair work should be performed by an experienced person, and electrical work only by a trained electrician. Use only recommended spare parts.

Rights reserved to alter specifications without notice.

C = component designation in the circuit diagram

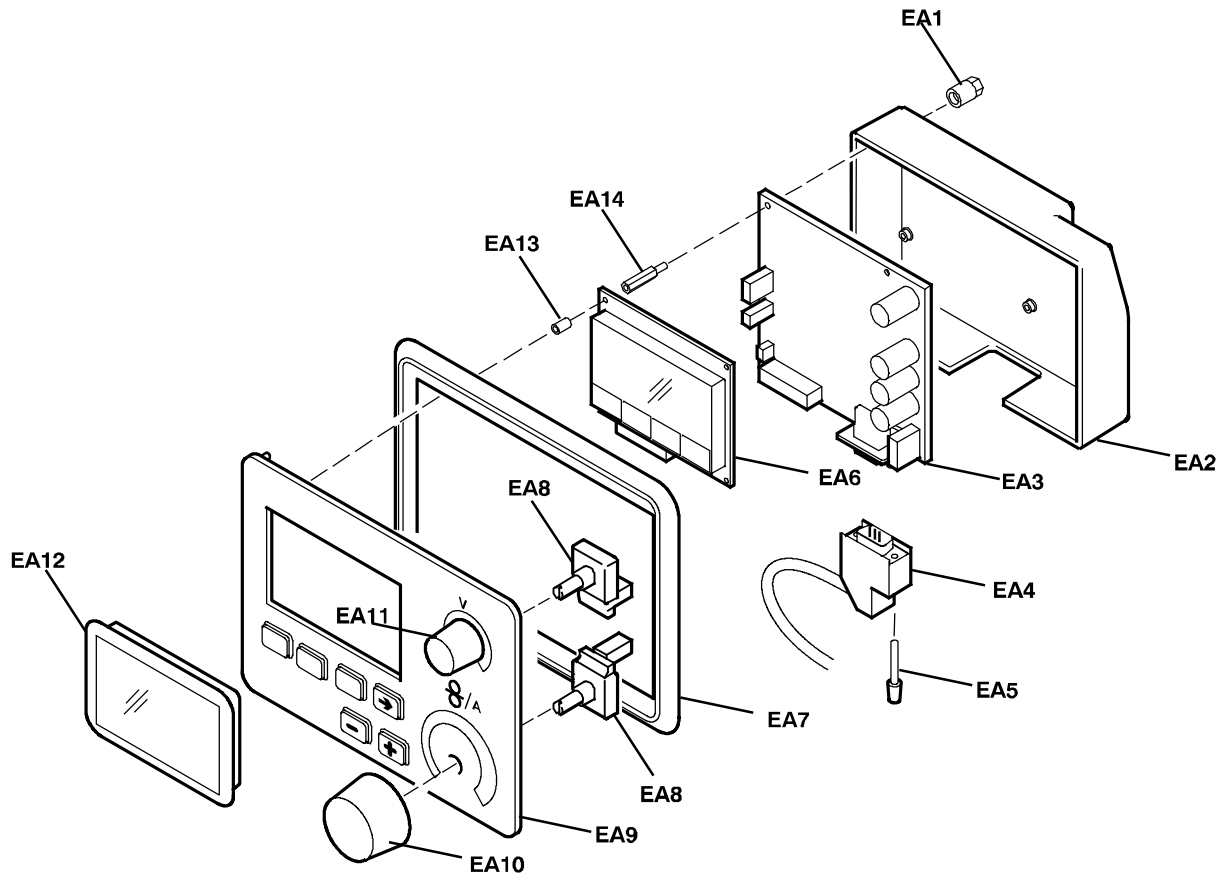
Item	Qty	Ordering no.	Denomination	Notes	C
		0458 535 882	Control panel M2	Complete, configured	
DA1	4	0458 544 001	Insulation nut		
DA2	1	0458 538 001	Screening box		
DA3	1	0486 819 887	Circuit board	The circuit board must be configured when installed	1AP1
DA4	1		Connector	9 pole, D-sub. See the wire feed unit spare parts list	
DA5	1	0193 052 981	Screw		
DA6	1	0458 381 001	Seal		
DA7	1	0458 540 001	Indicating lamp	LED	D1
DA8	3	0191 870 616	Potentiometer	10kΩ 2W	R1, R2, R3
DA9	3	0321 475 882	Knob	Black	
DA9	3	0460 600 836	Knob	Grey	
DA10	1	0458 539 006	Operating panel	M2	
DA11	1	0458 543 002	Rotary switch		SW2
DA12	1	0321 475 881	Knob	Black	
DA12	1	0460 600 821	Knob	Grey	
DA13	1	0458 543 001	Rotary switch		SW1
DA14	4	0394 516 003	Spacer screw	L = 10mm	
DA15	4	0458 537 001	Spacer screw	L = 17mm	



AH 0524Q

MA4**C = component designation in the circuit diagram**

Item	Qty	Ordering no.	Denomination	Notes	C
		0458 535 884	Control panel Aristo™ MA4	Complete, configured	
EA1	4	0458 544 001	Insulation nut		
EA2	1	0458 538 001	Screening box		
EA3	1	0486 819 880	Circuit board	The circuit board must be configured when installed	1AP1
EA4	1		Connector	9 pole, D-sub See the wire feed unit spare parts list	
EA5	1	0193 052 981	Stud screw		
EA6	1	0193 949 002	Display		1AP2
EA7	1	0458 381 001	Seal		
EA8	2	0193 912 001	Pulse generator		
EA9	1	0458 539 004	Operating panel	MA4	1AP3
EA10	1	0321 475 893	Knob	Black	
EA10	1	0460 600 536	Knob	Grey	
EA11	1	0321 475 892	Knob	Black	
EA11	1	0460 600 521	Knob	Grey	
EA12	1	0458 536 001	Display window		
EA13	4	0394 516 002	Spacer screw	L = 8mm	
EA14	4	0458 537 001	Spacer screw	L = 17mm	

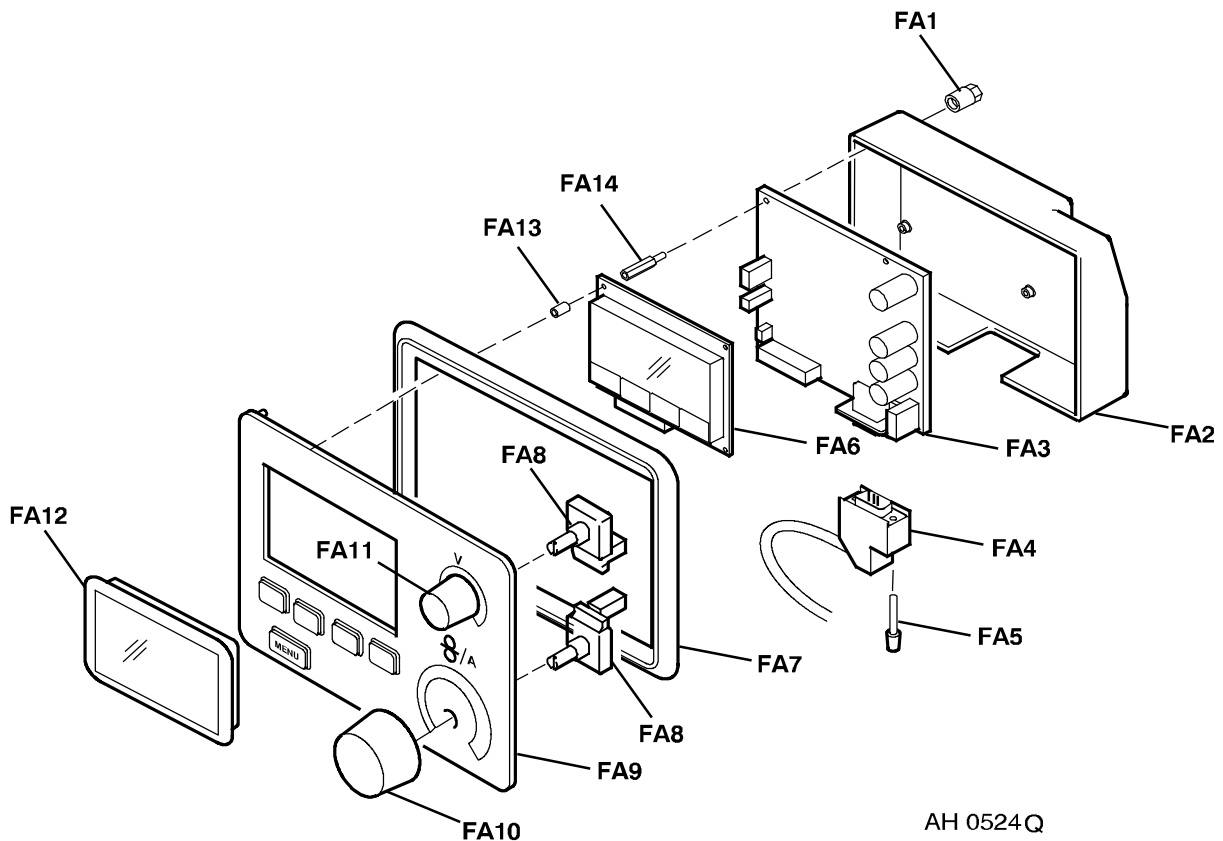


AH 0524Q

MA6

C = component designation in the circuit diagram

Item	Qty	Ordering no.	Denomination	Notes	C
		0458 535 886	Control panel Aristo™ MA6	Complete, configured	
FA1	4	0458 544 001	Insulation nut		
FA2	1	0458 538 001	Screening box		
FA3	1	0486 819 880	Circuit board	The circuit board must be configured when installed	1AP1
FA4	1		Connector	9 pole, D-sub See the wire feed unit spare parts list	
FA5	1	0193 052 981	Stud screw		
FA6	1	0193 949 002	Display		1AP2
FA7	1	0458 381 001	Seal		
FA8	2	0193 912 001	Pulse generator		
FA9	1	0458 539 005	Operating panel	MA6	1AP3
FA10	1	0321 475 893	Knob	Black	
FA10	1	0460 600 536	Knob	Grey	
FA11	1	0321 475 892	Knob	Black	
FA11	1	0460 600 521	Knob	Grey	
FA12	1	0458 536 001	Display window		
FA13	4	0394 516 002	Spacer screw	L = 8mm	
FA14	4	0458 537 001	Spacer screw	L = 17mm	



C = component designation in the circuit diagram

Item	Qty	Ordering no.	Denomination	Notes	C
		0458 535 890	Control panel Aristo™ U6	Complete, configured	
LA1	4	0458 544 001	Insulation nut		
LA2	1	0458 538 001	Screening box		
LA3	1	0486 819 880	Circuit board	The circuit board must be configured when installed	1AP1
LA4	1		Connector	9 pole, D-sub See the wire feed unit spare parts list	
LA5	1	0193 052 981	Stud screw		
LA6	1	0193 949 002	Display		1AP2
LA7	1	0458 381 001	Seal		
LA8	2	0193 912 001	Pulse generator		
LA9	1	0458 539 010	Operating panel	U6	1AP3
LA10	1	0321 475 893	Knob	Black	
LA10	1	0460 600 536	Knob	Grey	
LA11	1	0321 475 892	Knob	Black	
LA11	1	0460 600 521	Knob	Grey	
LA12	1	0458 536 001	Display window		
LA13	4	0394 516 002	Spacer screw	L = 8mm	
LA14	4	0458 537 001	Spacer screw	L = 17mm	

